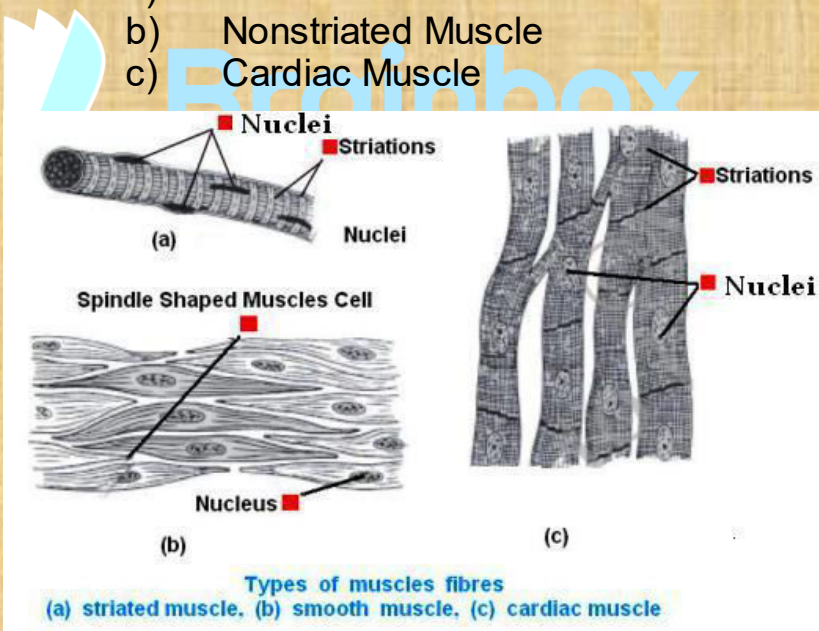


## Chapter 6

# TISSUES

## Muscle Tissue:

- Composed with elongated cells called [Muscle fibres - myolytes].
- Origin: Mesodermal
- Muscle tissue exhibits Irritability, Conductivity, Contractility.
- Types:
  - a) Striated Muscle
  - b) Nonstriated Muscle
  - c) Cardiac Muscle



## Striated /Striped/Skeletal/Voluntary:

- Muscle made up of Large number of myofibril with dark & light bands.
- Normally found attached to the bones in the Head, Trunk & Limbs.

## Non Striated Muscle:

- Muscle fibre is long narrow & spindle shaped with tapering ends with single, oval or elongated centrally located nucleus.
- Muscles have power of regeneration.
- Found in walls of visceral organs, dermal of skin, iris & ciliary body of eye

## Cardiac Muscle/Involuntary Muscle:

Cardiac Muscle:

- Muscle fibres are Uninucleate with large oval nucleus. which is present in centre.
- Found in Myocardium of Heart.

## Flow Chart:

